

Annual Report 2016



ie_{llen}

Joint CEO and Chairperson's Report

The Inner Eastern Local Learning and Employment Network (IELLEN) has been a key local presence since 2002, and in 2017 we celebrate 15 years of service. The goal of the IELLEN is to improve outcomes for young people by increasing opportunities for their participation, attainment and successful transitions in education, training or employment.

Our organisation is one of 31 LLENs across the state which all share a focus on young people who are at risk of disengaging, or who have already disengaged from education / training. Like other LLENs the IELLEN has actively worked this past year to create and develop sustainable relationships, partnerships and to broker initiatives with education providers, industry, and community organisations.

Our achievements during 2016 are particularly notable, given the relatively modest amount of funding and our small number of staff. With the equivalent of just two EFT (CEO and Program Worker) personnel we successfully led and facilitated a dozen partnerships, network projects or initiatives during 2016. In addition we gave active support to seven other partnerships, committees or groups through representation and input.

The scope of this work was wide, from addressing wellbeing issues, through to partnership activity around careers and post education transitions and employment. Partnerships addressed the middle years; young people who are carers; grandparents/kinship carers; applied learning; promoting STEM to girls; work readiness and workplace taster programs; and strategic regional partnerships that considered practical and policy issues, service delivery gaps and quality improvements. Are there any other organisations that have devoted resources, in just twelve months, to such a gamut of concerns?

In addition to the core LLEN contract, Education Minister James Merlino announced late in 2015 that following an independent review, each of the state's 31 LLENs would be funded to coordinate structured workplace learning (SWL) opportunities for school students in Victoria. The IELLEN promptly employed staff to establish and implement the new Department of Education SWL Program early 2016. As stated in this Report, we were committed to both quantity and quality. For example during the year IELLEN SWL staff placed over 400 opportunities across 11 different industries on the portal for schools and students to utilise, making us a leader in attracting employers into the program. In all cases we sought employers offering a safe place to learn, with tasks and duties linked to VETis courses.

By year's end we were pleased that the IELLEN successfully delivered on the two DET contracts. Our thanks for this result go to an outstanding staff team. During 2016 this included Ed Dunstan and Dennis Cindric, who worked closely with the CEO to deliver on these contracts. All our work was also supported by Sheena John in administration, who, like Ed, unfortunately left the organisation during the second half of the year.



However it was most pleasing to welcome additional staff during the last quarter of 2016. Tom Rankin and Tracey Fenton quickly established themselves as valuable employees, and with the recent appointment of Amy Liddy, the IELLEN started 2017 with a team of which any organisation would be proud. We are indeed fortunate to have such a highly skilled and talented group. The work of this team continues to be supported by an engaged and informed Committee of Management who provide sound governance and consistent support. Thank you!

To all stakeholders across various sectors – schools and education providers (including Learn Locals), LGAs; community organisations; business and industry – we acknowledge your genuine interest in supporting young people to have better futures, and we praise your willingness to working in partnership and collaboration to achieve this outcome.

Angela Stathopoulos (Chairperson)
and **Andrew Neophytou (CEO)**





Holly Carpenter Jessica Lawrence Bronwen Thompson Angela Stathopoulos

Ross Digby

Sam Joukadjian

Gary Buckeridge

Name	Organisation	Position
Angela Stathopoulos	Prahran Community Learning Centre	Chairperson
Bronwen Thompson	Community Member	Deputy Chairperson
Gary Buckeridge	TDT Training Australia	Secretary
Sam Joukadjian	IMG Norway	Treasurer
Ross Digby	Holmesglen Institute	CoM Member
Holly Carpenter	City of Stonnington Youth Services	CoM Member
Marisa Uwarow	City of Port Phillip Youth Services	CoM Member
Jessica Lawrence	Education Engagement Project, Cities of Stonnington and Port Phillip	CoM Member
Brenda Mainland	Survey Matters	Retired 2016
Geri Charles	Montague Continuing Education Centre	Retired 2016

Staff 2016



Sheena John

Ed Dunstan

Andrew Neophytou

Dennis Cindric

Carer Support Partnerships

Carers play a vital role in our community and it's important that their voices are heard. Thousands of Victorians give their time, effort and love into caring for a family member or friend who needs them. Carers include grandparents or kinship carers (who step in as primary care givers) and those who are school aged and young – even if they may not identify as a “carer”. In recognition of such the IELLEN facilitated and established two important Carer Support Partnerships during 2016.

Young Carer Partnership

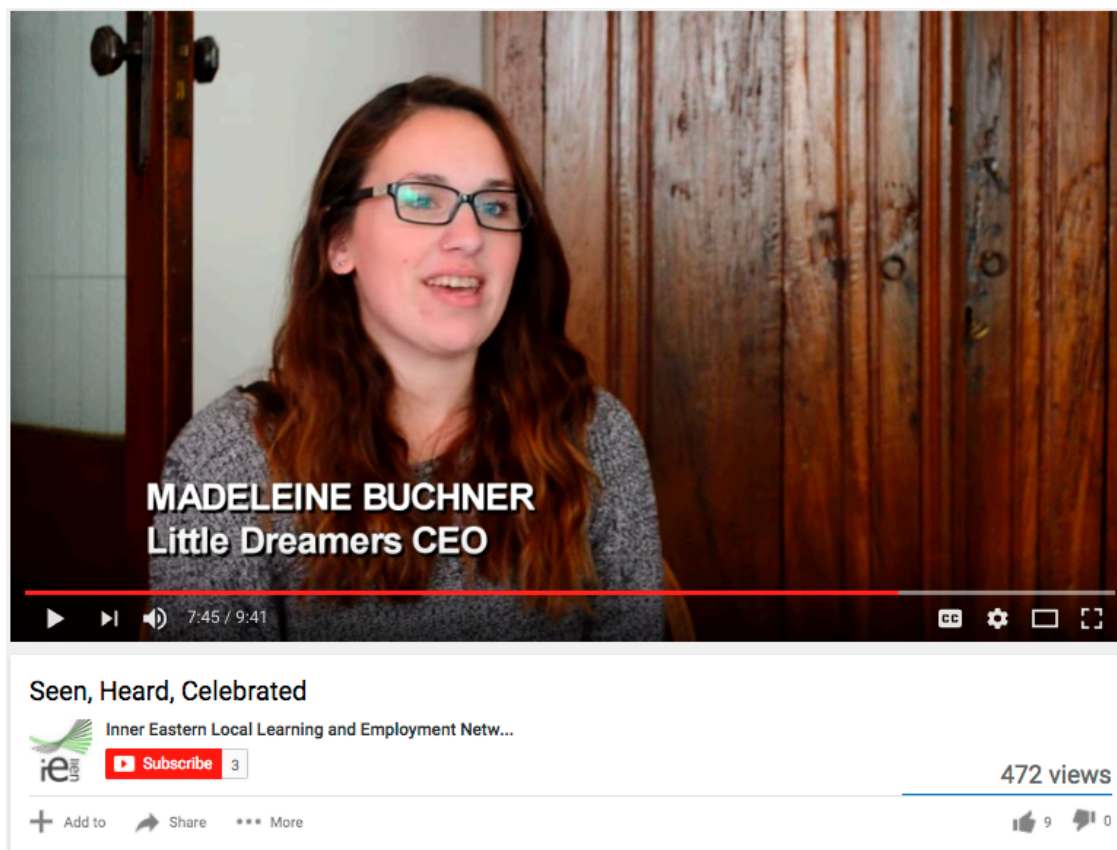
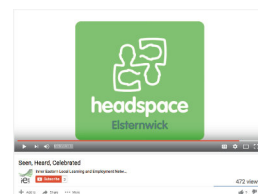
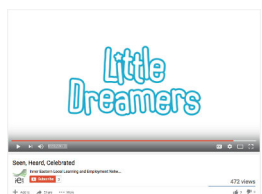
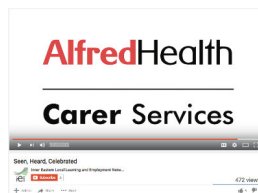
Through a partnership with several young carers' groups, the IELLEN delivered a successful young carer project, kicked off during Youth Week, and launched by Parliamentary Secretary for Carers and Volunteers, Gabrielle Williams MP. The YC Project partners included Little Dreamers, Alfred Health Young Carer Service, headspace, SFYS (Stonnington, Port Phillip and Glen Eira) and City of Stonnington Youth Services.

We've welcomed the many positive responses to our nine minute film “Seen, Heard, Celebrated” which features interviews with young carers. This well received short was subsequently shown at the IELLEN AGM and also at the 2016 Armed & Dangerous Film Festival.

Uploaded onto on an internet's video sharing site YouTube, the clip's had more than 450 views to date. Discussions are ongoing with stakeholders with regards further work including Young Carer support groups.



Ed Dunstan Gabrielle Williams MP Andrew Neophytou



Grandparents/Kinship Carers Working Group

A Partnership Group was established by the IELLEN in late 2015, comprising a diverse group of stakeholders: Prahran Community Learning Centre; TaskForce Community Agency; City of Stonnington; the Education Engagement Partnership, Melbourne Polytechnic, and City LLEN, which worked together to organise and run events during the year.

Two free public forums (titled “Caring Again?”) were held in March and in October, in Stonnington, and then in the CBD. Both forums aimed to raise awareness of the challenges for those stepping in as primary care givers; provide information and resources; and to support further advocacy work. Forum speakers comprised representatives from Grandparents Victoria; Australian Department of Human Services (Centrelink); the Mirabel Foundation; and a mature aged carer, Simon Clarke. At both events our speakers took questions and comments from attendees.

We were delighted that more than 70 people attended the forums, allowing us to also publicly recognise the valuable work done by grandparents and kinship carers. The IELLEN has subsequently welcomed state government announcements with regards increased support to carers, and that consultations are due to start for the Victorian Government’s Carers Statement, which will outline how we can best support and recognise carers of all ages.

Caring
Again?



Girls and Women in STEM – Ada Lovelace Day

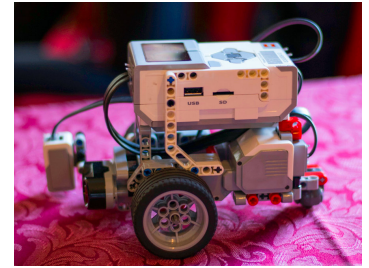
In recent years there have been many firsts achieved by the IELLEN. For example our organisation was the first to lead a partnership that hosted a state-wide “Middle Years Conference” in 2013. Then, in the following year it was the “Colour of Youth” Conference, the single largest event ever initiated by any of the 31 LLENs specifically devoted to issues around same sex attracted and gender diverse young people

In 2016 we achieved another first. Long active in promoting careers in Science, Technology, Engineering and Maths (STEM), the IELLEN led a partnership that hosted, on October 12, Melbourne’s first official Ada Lovelace Day event. This event celebrated the pioneering work of females in STEM industries, as well as promoting careers to a current generation of girls in secondary schools.

We were pleased the event had so many great outcomes. There was a strong turnout, with 80 people in attendance, most of whom were school students.

There were presentations by Leonie Walsh (former lead scientist for the Vic Government), Sophia Frentz (PhD candidate in genetics and Vice President of Women in Science and Engineering), Sid Verma (founder of BrainSTEM – Science Mentoring organisation), Olivia Noto and Calum Lindsay-Field (FYA) and a number of secondary school students. The event also included hands-on STEM activities, carried out by Girls who Code, Engineers without Borders and RoboGals.

The IELLEN was also pleased with evaluations, the event rated by attendees an average score of 8.56 (out of 10). For this success we thank IELLEN Project Officer Ed Dunstan in particular, for both his vision and his event coordination. Finally, we acknowledge key partners - Women in Science and Engineering, Lateral Magazine, Royal Society of Victoria, the City LLEN, DataSAM and Swinburne University - which all contributed to the success of Melbourne’s first official Ada Lovelace Day event.



Middle Years and Primary to Secondary Transitions

In recent years issues around transitions from primary to secondary school, and the age group 8 to 12 have been a consistent area of focus and partnership work for the IELLEN.

During 2016 we brought together several LGAs in a new partnership, which worked together to organise and host a workshop, "The In Betweenies" Middle Years forum. Held in November, this forum targeting LGA staff of Port Phillip, Stonnington, and Yarra. Attracting fifty staff, the half day was presented and facilitated by social researcher Ashley McKenzie, and 100% of attendees rated it as either "somewhat" or "very" useful. Altogether, a great success.

The IELLEN will continue working with LGAs and other stakeholders on transitions and middle years issues into 2017. In addition, we're keen to continue promoting our "Fire Up!" (primary to secondary transition) video clip / DVD. With great content, we're confident this remains a relevant, useful resource. Available for viewing on the video sharing site vimeo, it's now been seen there - by parents and stakeholders working with them - over 800 times.



Careers Up Close and Work Readiness Programs

The IELLEN develops, in partnership, various initiatives to build schools' capacity to support students at risk of disengagement and improve and maintain levels of engagement.

One example during 2016 were career presentation sessions to schools and smaller groups as part of our Careers Up Close Program. Sessions on the pathways that young professionals have taken were conducted at secondary schools, including Auburn High and Albert Park College.

We're very pleased that all presentations were well received. Complementing "Careers Up Close" was our Work Readiness Programs which involved our staff working in partnership to deliver career/work readiness presentations during the year.

Several examples worth highlighting were our contribution to the "Ready Set Work" program, a partnership with the Inner Melbourne VET Cluster and Boroondara Youth Services; with Launch Housing's YOLO program; and with and for participants at the St Kilda PCYC Homework Club. Career focused partnership activities will occur again in 2017.

Ticket to Work and Workplace Tasters

The IELLEN facilitated and co-ordinated a Ticket to Work Network throughout 2016, engaging with schools, convening meetings, and promoting events, activities and opportunities in education, employment and/or training related to young people with disabilities.

Arising from this network, staff at the IELLEN also organised six workplace tasters to local businesses during the year, with more than forty young people benefiting from these taster visits. Work experience opportunities were also promoted, with four placements made available by the IELLEN in partnership with City of Port Phillip.

In summary, Ticket to Work was a successful network, providing a continual source of information and opportunities for young people with a disability, as well as disability related services/education.



Regional Community Partnerships

During 2016 the IELLEN led a new Regional Community Partnership, bringing together providers which work young disengaged people, with the aim of encouraging greater co-operation and collaboration. This Partnership was established largely in response to the number of new state and federal programs that had been announced during the year.

The first meeting of the RCP attracted representatives of organisations which hold contracts for programs such as Reconnect, and Transition to Work, amongst others, and we also welcomed representation from the Australian Department of Human Services. This RCP has now secured interest from JVEN providers, and an expanded partnership is likely to meet during 2017.

On Track Surveys

In addition to the IELLEN and SWL program contracts all 31 LLENs during 2016 conducted the "On Track" program. Between May and June 2016, the Department of Education (through the LLENs) surveyed thousands of students across the state. The annual On Track survey tracks young people who have completed Year 12 and those who are early school leavers, with a focus on those who also report not being fully engaged in study or paid employment. For its part the IELLEN surveyed close to fifty young people who had attended schools in our catchment, providing, where requested, further information and/or referral to those surveyed.

Inner Metro Youth & Community Partnership (IMYCP)

The IELLEN stepped in during 2016 as Convenor of the IMYCP once again, after convening this network previously for many years. With a membership of twenty stakeholders (five LGAs and various not for profits) this group meets around issues regarding at risk and young disengaged people, with a focus on best practice, new programs, and co-operation and collaboration among stakeholders. By extension IMYCP also considered service delivery gaps and government policy.

In 2016 the IELLEN chaired meetings, and on behalf of the members, organised various guest presentations. Among them were the new Navigator providers - Mission Australia and Anglicare - which service DET Bayside Peninsula and Western Melbourne Areas respectively. We also heard from representatives from the state Office for Youth when there were new announcements, such as the Andrews Labor Government's Youth Policy: Building Stronger Youth Engagement In Victoria (2016).

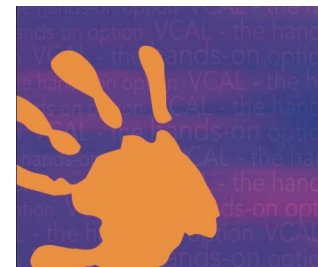
During 2016 IMYCP meetings provided a unique opportunity to hear from peak body representatives. On behalf of members the IELLEN maintained relationships with the Youth Affairs Council of Victoria (YACVic), Victorian Council of Social Services (VCSS), and the Centre for Excellence in Child and Family Welfare, all of which had policy staff give regular meeting presentations. In addition we welcomed the Council for Homeless Persons (CHP) which now has a representative who regularly attends. To all these peak bodies we thank you for your availability, informed input, and your vital advocacy work. We look forward to a continued association throughout 2017.

VCAL Network

Most schools in our catchment which offer applied/ flexible and or VCAL learning were members of our well established Network, which has provided a platform for information sharing and networking for stakeholders.

Several meetings were held during the year, including over lunch at the HEAT café, staffed by MCM VCAL students. The IELLEN also promoted and participated in the Armed & Dangerous Film Festival, which showcased short films in which VCAL students are involved. We were thrilled that our short film "Seen, Heard, Celebrated" (directed by Nicolai P. Stecher) was introduced and shown at the Festival.

Through the VCAL network the IELLEN also promoted our Annual Awards event, for which VCAL members nominated students. We were pleased that providers/members, along with students, also attended last year's Awards event.



The IELLEN again conducted a successful, well received Awards event as part of our AGM. This annual event recognises the efforts and achievements of education providers, business and industry, not for profits, and young people.

At our 2016 event awards were personally presented by Adam Whitbread, VCAL Manager from Victorian Curriculum and Assessment Authority (VCAA), and by 2016 Award sponsors: Sam Joukadjian from IMG Norway, Brenda Mainland (Survey Matters) and Ray Blessing (Taskforce Community Agency).

Education/Business and/or Community Partnership of the Year

In this category we had two winners: the Education Engagement Partnership (EEP) which co-ordinates the efforts of 22 partnering agencies to support young people 10 -19 who have disengaged or are at risk of disengaging from learning or work, across Stonnington and Port Phillip.

The other winner was Montague Continuing Education Centre which collaborated with Open Family Australia to run “teens2teens” a program involving students preparing and cooking food on a weekly basis for homeless young people.

In this category we also gave a third Award, recognising South Port Uniting Care’s Bicycles Over Lunchtime (BOLT) Program, which is targeted at boys aged 9-12. BOLT utilises bikes as engagement tool to assist boys in building their communication, socialisation, and team work skills. The program’s now run in a number of primary schools across the IELLEN area.

Small Employer of the Year was awarded to Long Street Coffee, a café whose management is passionate about giving opportunities to young refugees and recently arrived migrants. The social enterprise opened in 2015 after a successful crowdfunding campaign, and has since provided many work placement opportunities, as well as workplace taster activities with the IELLEN.

Large Employer of the Year went to the City of Port Phillip for its annual public education campaign, “Summer in the City” which engages with residents and visitors on issues concerning the sustainable and responsible use of public spaces.

Community Impact Award went to Prahran Community Learning Centre for its “Community Engagement through Art Exhibitions”. PCLC students (enrolled in the YELLA and VCAL programs) participated in a number of exhibitions such as the Flavours Festival; The World Through My Eyes (Chapel off Chapel); the NAIDOC Week Celebration’s art display, and others. These exhibitions provide opportunities for students to learn from one other, also nurturing a strong sense of community involvement.



We had four Awards in student categories. **VET Student of the Year** went to Maggie Grant, described as an exemplary student, a positive ambassador for Camberwell High School through her involvement in Vocational Education.

SBAT Student of the Year was awarded to Tina Karras, who gained valuable skills at IMVC, working 1 day a week during School Terms and more often during holidays. By the end of last year she completed her Certificate III in Business Administration and Senior VCAL, which led her to an opportunity of full time employment with IMVC.

VCE Student of the Year went to Belinda Yao, at Camberwell High, who succeeded and secured an offer of a place at RMIT in Biomedical Science.

VCAL Student of the Year was Elizabeth Batzakidis, enrolled in VCAL Senior and the Certificate III in Visual Art at PCLC, where she successfully completed a VCAL work placement in PCLC’s Occasional Child Care Service. Elizabeth had also written and illustrated a children’s book, a contribution to the Premiers Reading Challenge.



The **Outstanding Achievement of the Year Award (by an Individual aged over 20)** recognises an adult who contributes within a school or community group, and who has made a difference in that setting.

In this category we had two winners. Bronnie Walsh is a teacher, Community Educator, snorkel and bike tour leader for the Port Phillip EcoCentre.

Bronnie embodies a boundless energy, and among her many achievements is working with Duke of Edinburgh students from Elwood College to build their cycling confidence in order to conduct "citizen science" research activities across the City of Port Phillip.

Equal winner in this category was 23 year old PhD candidate Jack Scanlon, chief editor of Lateral, an online science magazine by and for young people, who has worked with a team of contributors to build Lateral through a crowd funding campaign. Jack has also co-presented with the IELLEN in schools on STEM presentations, including a session to two hundred Year 9 students at Camberwell High.

Outstanding Achievement of the Year (by an Individual, aged 15 to 20) was also equally shared.

Gio Fitzpatrick, a 19 years old who lives in the City of Port Phillip has developed a passion for the environment, wildlife protection and conservation advocacy. Knowledgeable and mature beyond his years, Gio works and volunteers with the EcoCentre and South Port Uniting Church.

Some of the activities have included working with school students on maintaining nesting boxes for vulnerable species; re-establishing the Friends of Elster Creek Network; and a YouTube channel profiling his wildlife surveys.

Our second winner in this category was 17 year old Amina Hassan, who was born in Somalia and spent a significant amount of her childhood living in a Kenyan refugee camp.

She attends a local school, and also commenced work at Long Street Coffee on weekends, her first job in Australia. The café has praised Amina's eagerness to learn, and her extraordinary work ethic.



In early 2016, the IELLEN along with the other 30 LLENs were funded by the State Government to deliver the new Structured Workplace Learning (SWL) Program. The SWL Program aims to improve access to work placements for Senior Secondary students by having LLENs identify host employers and placing opportunities onto a central portal for all schools and eligible students to utilise.

In 2016, the IELLEN signed up 43 employers and placed in excess of 400 opportunities on the portal for schools and students to utilise. This made the IELLEN one of the leading LLENs in attracting employers into the program and entering opportunities onto the portal.

The IELLEN's SWL Program strives to also ensure all opportunities placed on the portal are of quality, with employers committed to quality that not only provide students with a safe place to learn, but to provide tasks and duties that are linked to their VETis course.

One such opportunity, and placement, was at Mad Scientist, where two Year 11 Methodist Ladies College students completed 40 hours of Structured Work Place Learning to complement their Certificate III in Business.

During their one week placement, the students gained exposure to account management, project management, organising and attending client meetings, various industry specific software, researching client websites and search engine optimisation.

They utilised various business related technology and had the opportunity to develop their team work, communication and time management skills by completing various task and reports.

The feedback received by both employer and students was this was an highly successful and enjoyable placement.



A big thank you to these employers

Argyle Road Childcare Centre	Bayford BMW	Bayford Volkswagen	Bayview On The Park
Camberwell Toyota	Capital Building Contractors	Capital Kitchen Chadstone	Central Park Childcare Centre
Chapel Fitness	City Peugeot	Dipalma's Restaurant	EFM Health Clubs Hawthorn East
FB Salon	Fresco Frames	Hawthorn Community House	Heritage Care – Chomley House
Hitmaker Studios	i.d. build	IMG Australia Pty Ltd	Kew Neighbourhood Learning Centre
Mad Scientist	Movement for life Windsor	National Tiles	Nazareth Care Camberwell
Penfold Motors	Pet Stock Hawthorn	Prahran Community Learning Centre	Restaurant Quaff
rokk ebony	Room For Improvement	Rubi Hair	Rubi Hair Windsor
Sagra	Santoni	Short Black Café	South Yarra BMW
Target Camberwell	Target Chadstone	The Bean Thief	The Maling Room
Through Road Kindergarten and Childcare	Victorian Tennis Academy	Wicked Witch Software	

As well as establishing and facilitating our own partnerships, the IELLEN supported as many partnerships and initiatives as staff ng resources could allow.

Back to Front

Involving four partner organisations - the IELLEN, Prahran Community Learning Centre, TaskForce Community Agency and Phoenix Park Community House - the ACFE funded partnership “Back to Front” project ran from 2015 and concluded late in 2016.

Back-to-Front allowed management to consider and trial ways to consolidate back-of-house functions across the four organisations, with a view developing a cost-effective and efficient model of delivering essential services for day-to-day business.

As a small not for profit the IELLEN identified benefit in sharing resources, expertise and systems in relation to Governance, Human Resources, Finance, and OH&S. We welcomed discussing and trialling ways to consolidate some back-of-house functions, and for the opportunity for a more concerted effort in relation to continuous quality improvement.

The project was of real benefit to the IELLEN, and we especially acknowledge members of the Taskforce finance team for advice and assistance throughout the project period.

During the second half of 2016 the IELLEN was pleased to join two new important and worthwhile partnership committees: the (Mission Australia) Bayside/Peninsula Navigator Executive, and “Communities That Care (Stonnington).

By year’s end the Bayside/Peninsula Navigator service had an almost full caseload of young people, and CTC (Stonnington) has secured the interest of a number of schools to participate in surveys, which will measure risk and protective factors among young people connected to the municipality.

With plans for increased staff ng levels in 2017, it is hoped that the IELLEN can support additional partnerships and initiatives, such as School Focused Youth Service (SFYS) across Boroondara and Manningham.

In addition to support through committee representation, the IELLEN also supported new funding proposals during 2016, including writing letters of support and encouraging partnership/consortia proposals. We welcomed youth advocacy work through membership of peak bodies, and continued to support young people’s voices being heard and youth participation generally.

The IELLEN also actively supported - largely through committee representation - the following throughout 2016:

School Focused Youth Service (Stonnington, Port Phillip, Glen Eira)

Education Engagement Partnership (EEP) across Stonnington and Port Phillip

Boroondara Young Peoples Advisory Committee

Prahran Community Learning Centre

Youth Affairs Council of Victoria – Policy Advisory Group

