

EMPLOYMENT

IELLEN ENVIRONMENTAL SCAN 2018



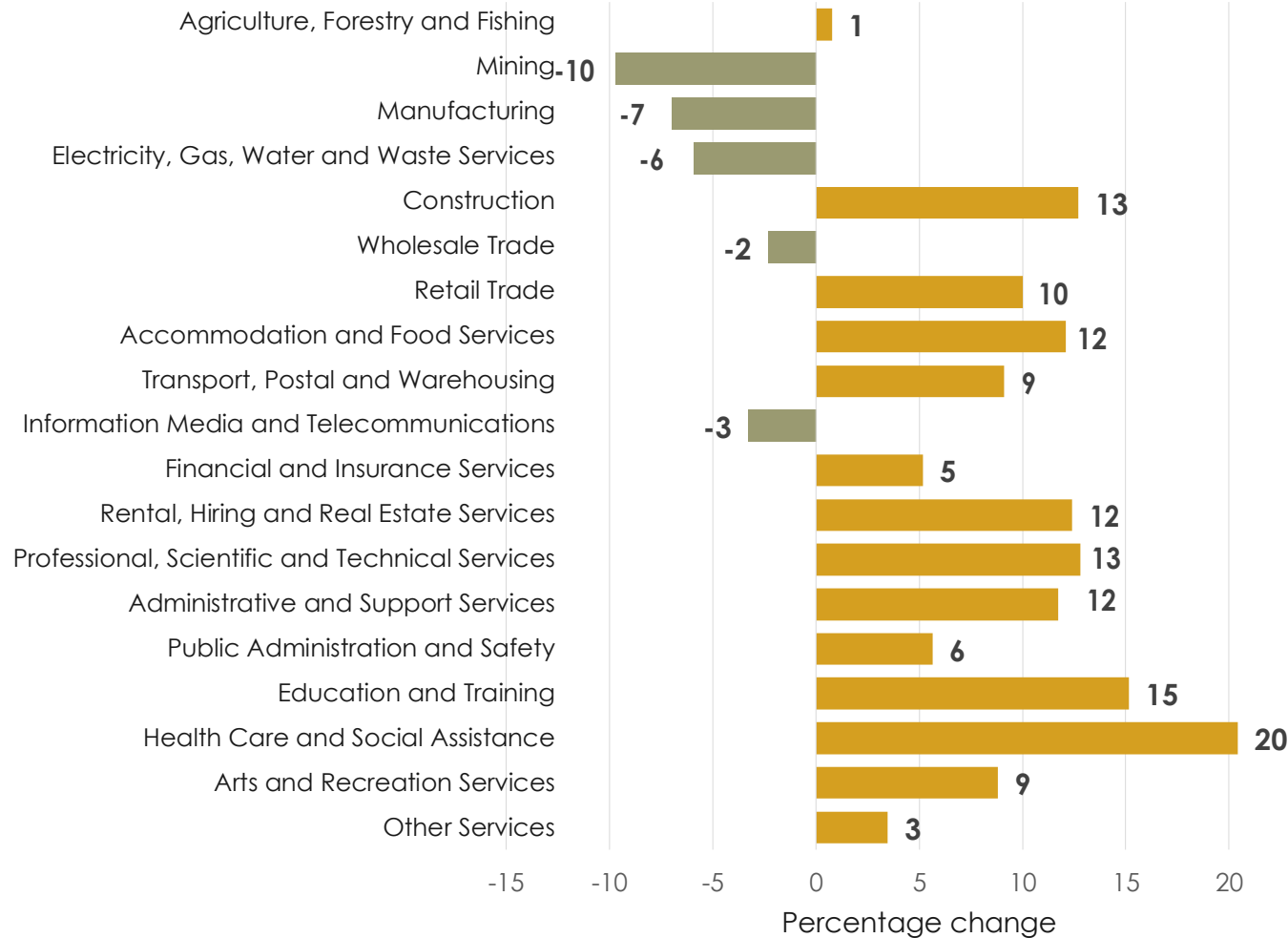
BOROONDARA

PORT PHILLIP

STONNINGTON

Employment Projections to 2022

Inner Metropolitan Melbourne



Employment Region - Employment Projections to May 2022

Data Source: Department of Jobs and Small Business 2017 Employment Projections to May 2022

Employment growth to 2022

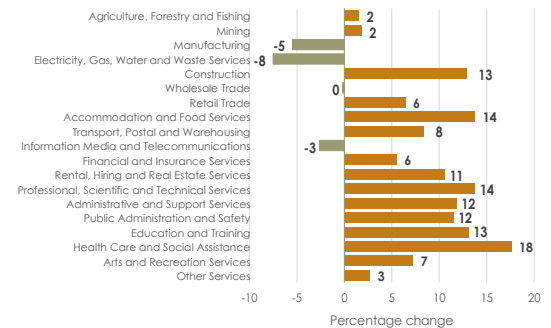
Inner Metropolitan Melbourne 11.4%

Greater Melbourne 9.8%

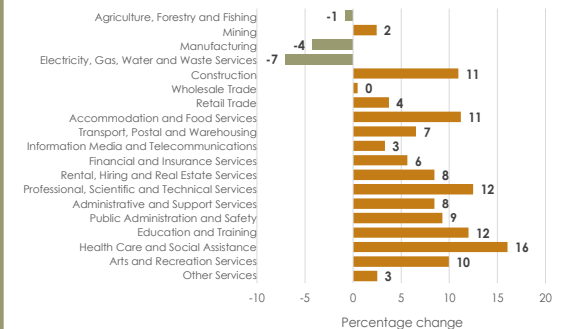
Victoria 8.8%

Australia 7.8%

Victoria

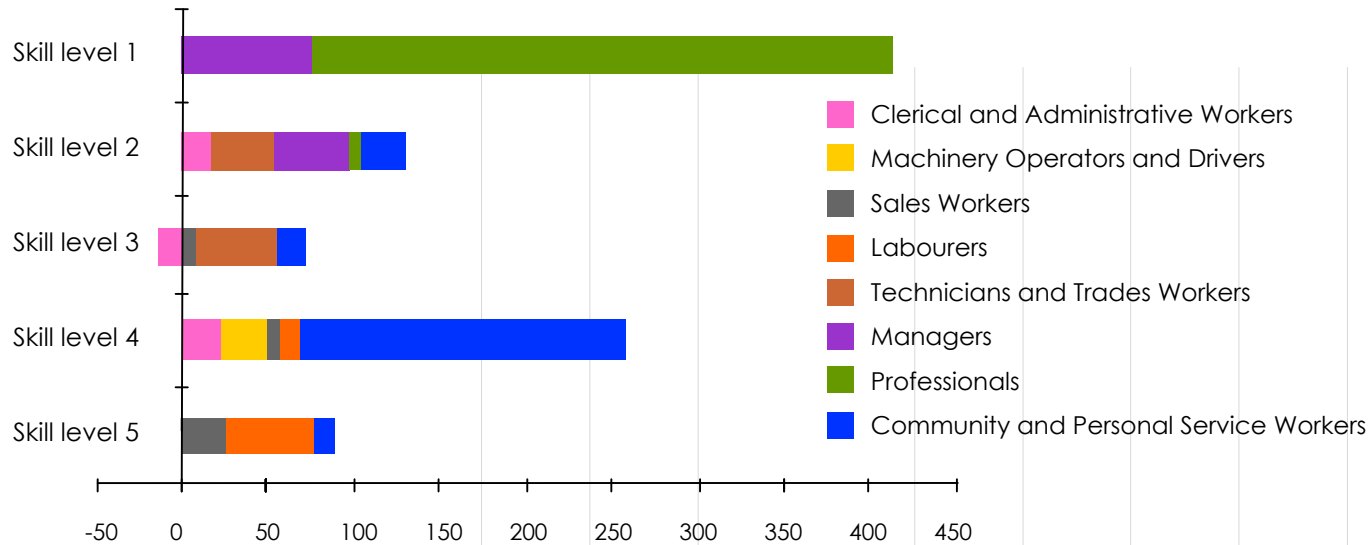


Australia



Skill Level Projections to 2022

Over half of Australia's projected employment growth will be made up of Skill levels 1 and 2



Projected employment growth to May 2022 ('000) for skill levels by occupation

Data Source: Employment Outlook to May 2022, Department of Jobs and Small Business

Skill level 1

Bachelor degree or higher qualification

10.7% increase

Registered Nurses 23%

Software & Applications Programmers 14.5%

Skill level 2

Advanced Diploma or Diploma

9.5% increase

Cafe and Restaurant Managers 18.5%

Welfare Support Workers 22.1%

Skill level 3

Certificate IV or III with at least 2 years on-the-job training

Only 3.4% increase

Reductions for Secretaries, Metal Fitters & Machinists, Structural Steel & Welding Trades Workers

Skill level 4

Certificate II or III

4.2% increase

Growth driven by Community and Personal Service Workers, such as Aged and Disabled Carers
47.3%

Skill level 5

Certificate I or secondary education

Smallest contributions to employment growth

4.4%

3	Employment Profile	1
3.0	Employment (Census).....	1
3.0.1	Employment status.....	1
3.0.2	Employment – hours worked	3
3.0.3	Occupation.....	4
3.0.4	Industry of employment.....	6
3.1	Employment locations	8
3.1.1	Boroondara	8
3.1.2	Port Phillip	9
3.1.3	Stonnington	10
3.2	Unemployment (Labour Force Survey)	11
3.2.2	LGA unemployment rates, September 2011-2017	11
3.3	Youth unemployment (Census).....	12
3.3.1	Youth unemployment	12
3.3.2	Labour force status 15-19 year olds	13
3.3.3	Labour force status 20-24 year olds	14
	Sources	15

3 EMPLOYMENT PROFILE

3.0 EMPLOYMENT (CENSUS)

There are two measures of labour market activity of people aged 15 years and over in Australia – the Census of Population and Housing (Census) and the Labour Force Survey (LFS). Both provide information about employment, unemployment and being outside the labour force, however there are differences between them and they are not directly comparable.

The Labour Force Survey produces the most authoritative and recent estimates of labour market information, including employment and unemployment. These high quality statistics measure changes over time and are highly accurate, suitable for international comparisons. They are published monthly by the ABS in Labour Force, Australia (cat no. 6202.0).

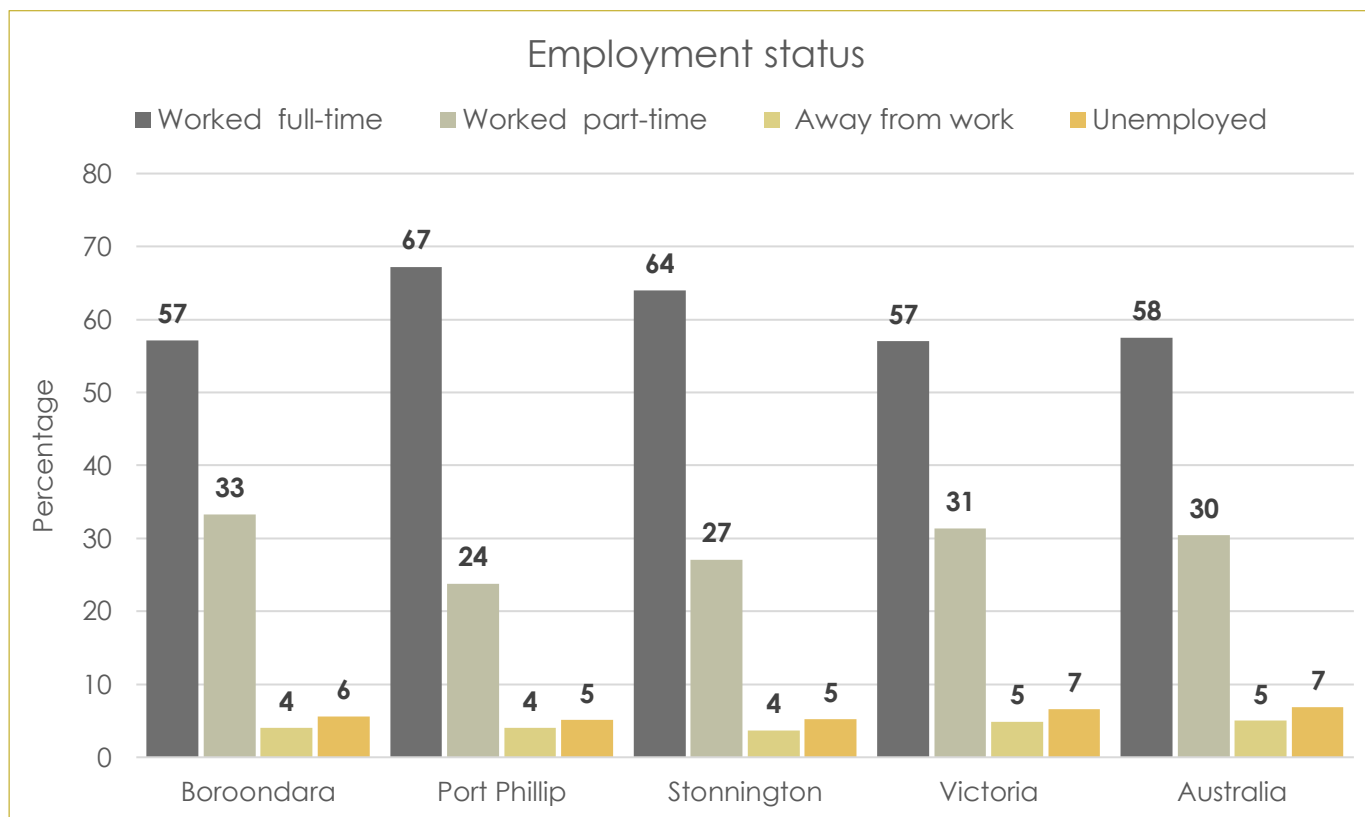
Census data however, is a single snapshot taken every five years. It enables analysis of labour market activities and industry and occupation data for small population groups and areas. The wide range of data collected beyond labour force status makes possible analyses across a broader range of socioeconomic dimensions.

The following information on employment status, hours worked, occupation and industry of employment is from people aged 15 years and over who reported being in the labour force in the week before Census night.

3.0.1 EMPLOYMENT STATUS

Area	% Worked full-time	% Worked part-time	% Away from work	% Unemployed	Total workforce
Boroondara	57.1	33.3	4.0	5.6	87,094
Port Phillip	67.2	23.8	4.0	5.1	60,782
Stonnington	64.0	27.1	3.7	5.2	59,684
Victoria	57.0	31.4	4.9	6.6	2,929,592
Australia	57.5	30.4	5.0	6.9	11,471,296

Source: ABS Census, 2016



According to Census data, a higher proportion of people in Port Phillip and Stonnington worked full-time than in Boroondara, Victoria and Australia (67.2%, 64.0%, 57.1%, 57.0% and 57.5% respectively).

However, Boroondara had a higher proportion of people who worked part-time, at 33.3%.

The percentage of people who were unemployed in the three local government areas was lower than Victoria (6.6%) and Australia (6.9%).

3.0.2 EMPLOYMENT – HOURS WORKED

Area	1-15 hours per week	16-24 hours per week	25-34 hours per week	23-39 hours per week	40 hours or more per week
Boroondara	14.2	10.8	10.2	13.2	47.3
Port Phillip	7.9	8.0	9.2	16.0	54.8
Stonnington	10.5	9.3	8.8	15.1	52.3
Victoria	12.0	10.5	11.2	18.7	42.4
Australia	11.4	10.1	11.2	19.0	43.0

Source: ABS Census, 2016

More people in Port Phillip worked 40 hours or more per week, at 54.8%, compared to:

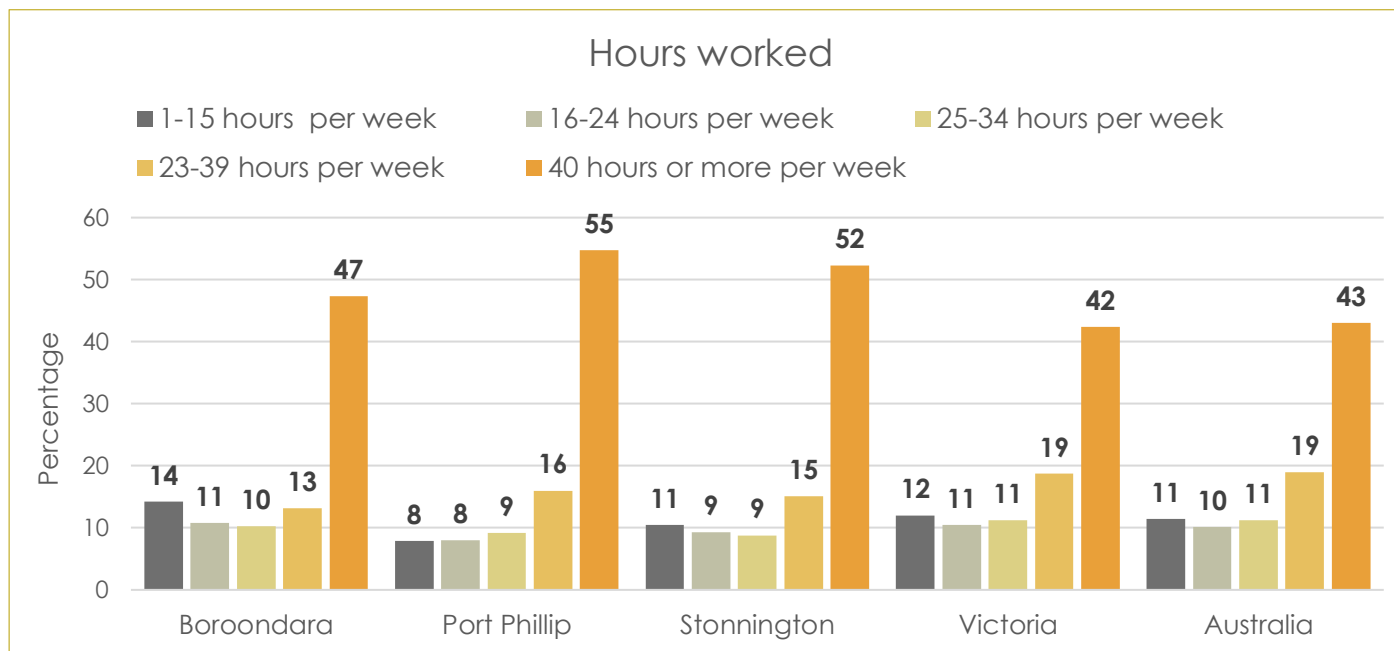
- Stonnington, at 52.3%
- Boroondara, at 47.3%
- Australia, at 43.0%, and
- Victoria, at 42.4%.

Fewer people in the three LGAs of interest worked 23-39 hours per week:

- Port Phillip 16.0%
- Stonnington 15.1%
- Boroondara 13.2%, in comparison to:
- Victoria 18.7%, and
- Australia 19.0%.

Of those people who worked 1-15 hours per week, Boroondara had the highest percentage, at 14.2%, followed by:

- Victoria 12.0%
- Australia 11.4%
- Stonnington 10.5%, and
- Port Phillip at 7.9%.



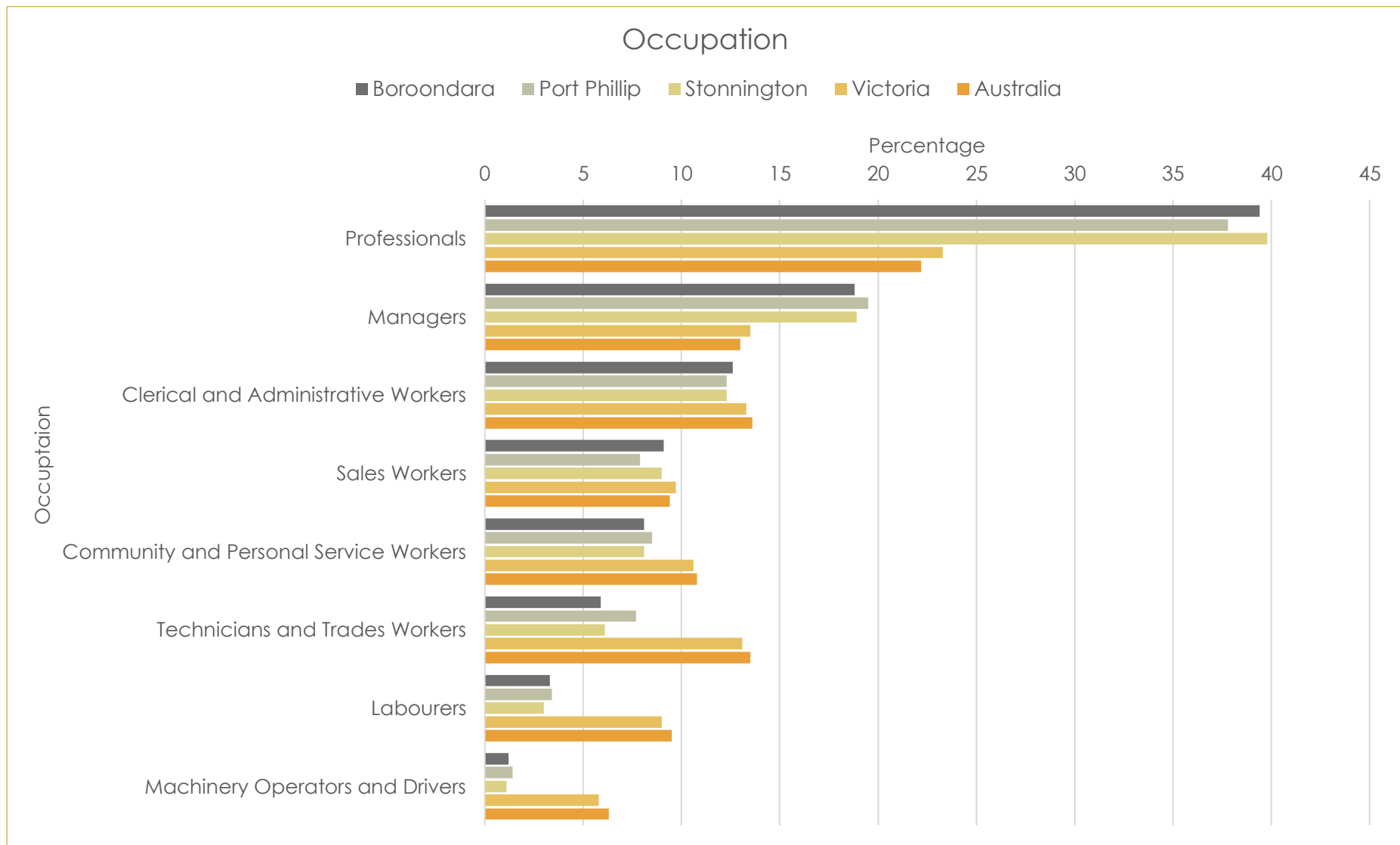
3.0.3 OCCUPATION					
Occupation	Percentage				
	Boroondara	Port Phillip	Stonnington	Victoria	Australia
Professionals	39.4	37.8	39.8	23.3	22.2
Managers	18.8	19.5	18.9	13.5	13.0
Clerical and Administrative Workers	12.6	12.3	12.3	13.3	13.6
Sales Workers	9.1	7.9	9.0	9.7	9.4
Community and Personal Service Workers	8.1	8.5	8.1	10.6	10.8
Technicians and Trades Workers	5.9	7.7	6.1	13.1	13.5
Labourers	3.3	3.4	3.0	9.0	9.5
Machinery Operators and Drivers	1.2	1.4	1.1	5.8	6.3

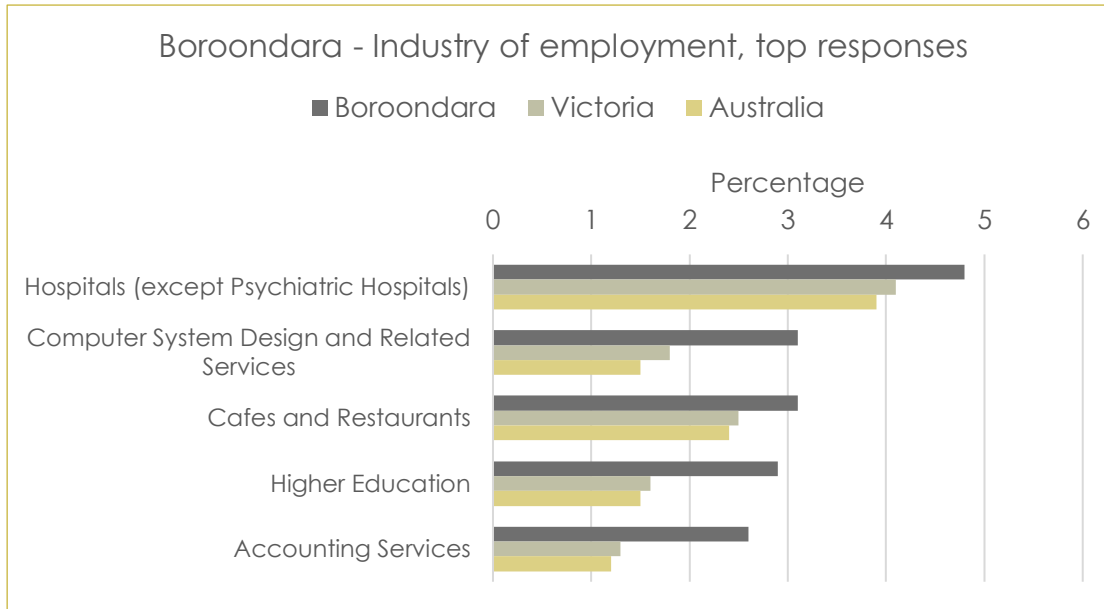
Source: ABS Census QuickStats, 2016

All three LGAs of interest have higher percentages of Professionals, Managers and Clerical and Administrative Workers than Victoria and Australia. And, lower percentages of Sales Workers, Technicians and Trades Workers, Labourers, and Machinery Operators and Drivers.

The three LGAs have similar percentages across all Occupation categories, except for the following wider differences:

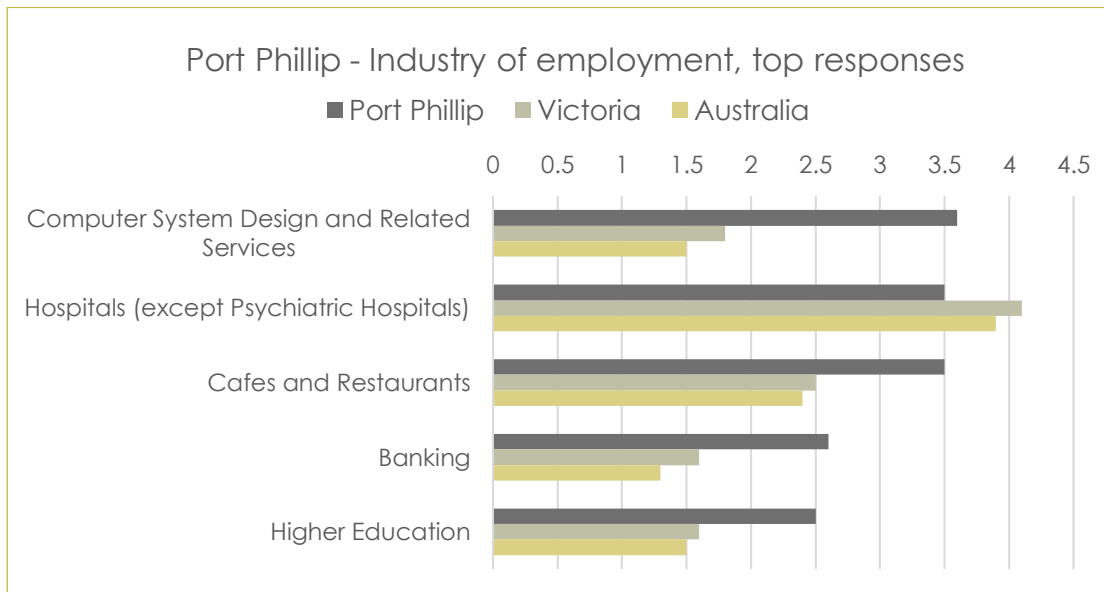
- In the Sales Worker category, Port Phillip has fewer (7.9%) in comparison to Boroondara (9.1%) and Stonnington (9.0%).
- Port Phillip has more Technicians and Trades Workers (7.7%) than Stonnington (6.1%) and Boroondara (5.9%).





Of employed people in Boroondara:

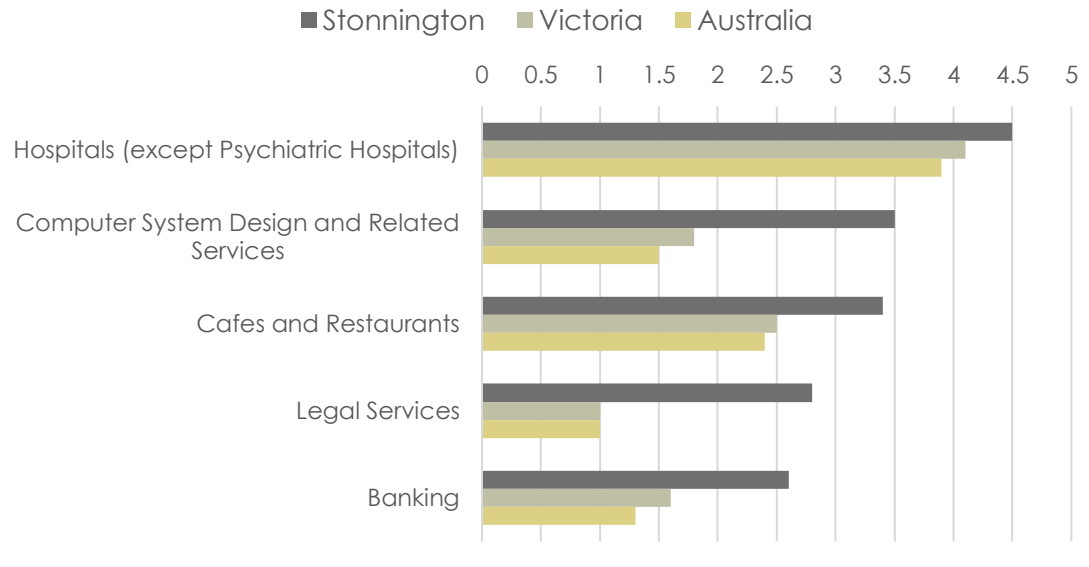
- 4.8% worked in Hospitals (except Psychiatric Hospitals), compared to Victoria at 4.1%
- Computer System Design and Related Services 3.1% (Victoria 1.8%)
- Cafes and Restaurants 3.1% (Victoria 2.5%)
- Higher Education 2.9% (Victoria 1.6%), and
- Accounting Services 2.6% (Victoria 1.3%).



Of employed people in Port Phillip:

- 3.6% worked in Computer System Design and Related Services, compared to Victoria at 1.8%
- Hospitals (except Psychiatric Hospitals) 3.5% (Victoria 4.1%)
- Cafes and Restaurants 3.5% (Victoria 2.5%)
- Banking 2.6% (Victoria 1.6%), and
- Higher Education 2.5% (Victoria 1.6%).

Stonnington - Industry of employment, top responses



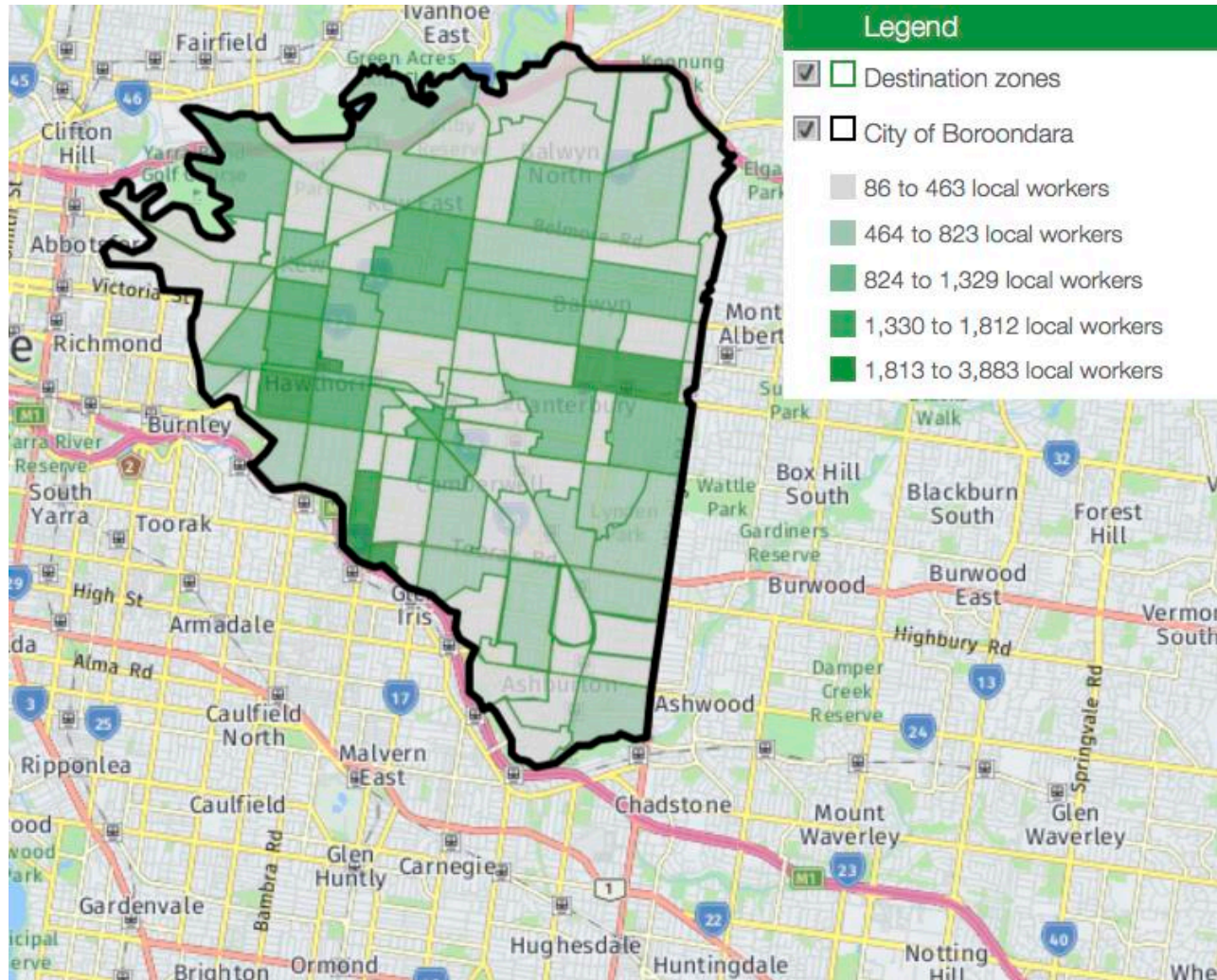
Source: ABS Census QuickStats, 2016

Of employed people in Stonnington:

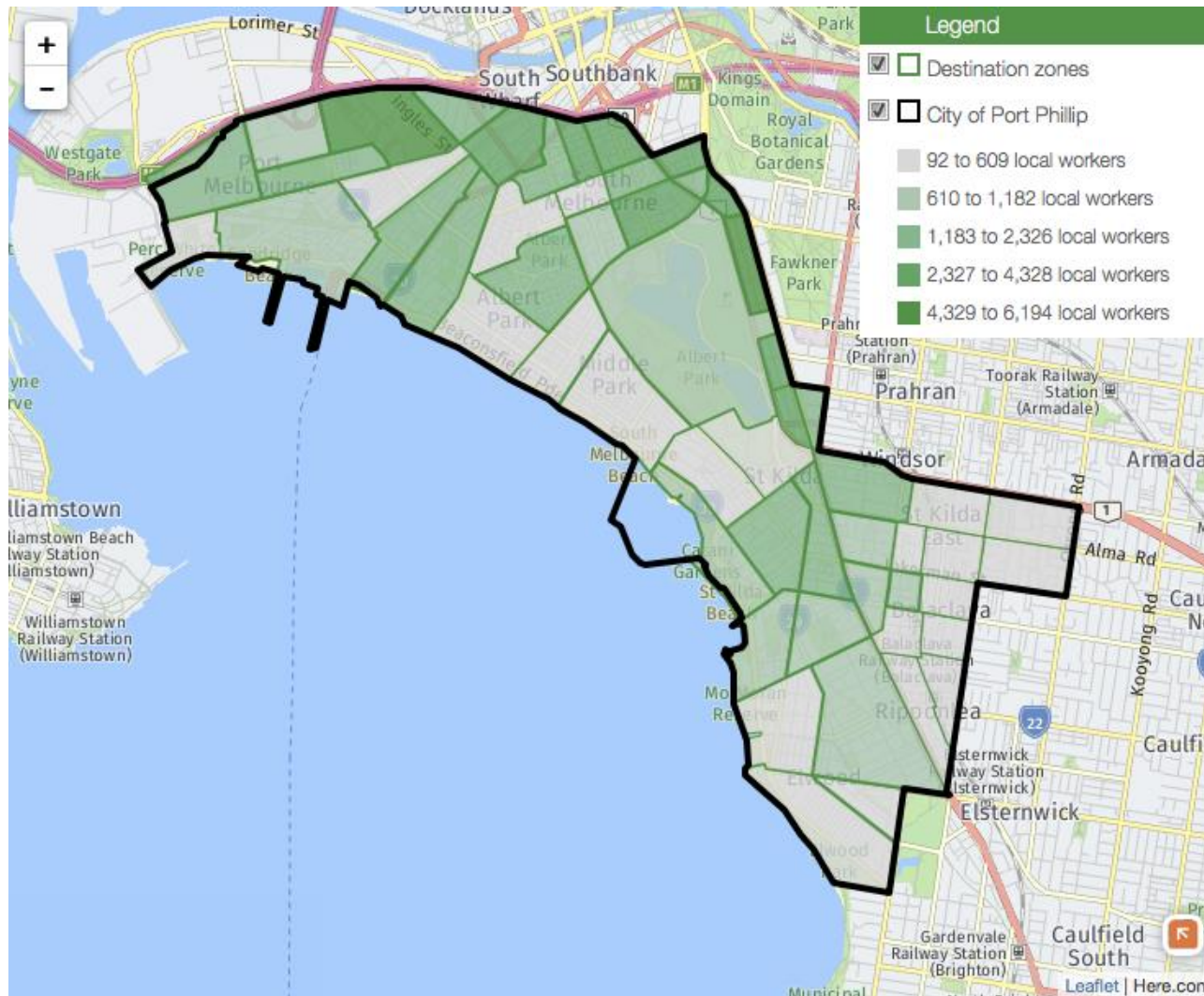
- 4.5% worked in Hospitals (except Psychiatric Hospitals) compared to Victoria at 4.1%
- Computer System Design and Related Services 3.5% (Victoria 1.8%)
- Cafes and Restaurants 3.4% (Victoria 2.5%)
- Legal Services 2.8% (Victoria 1.0%), and
- Banking 2.6% (Victoria 1.6%).

3.1 EMPLOYMENT LOCATIONS

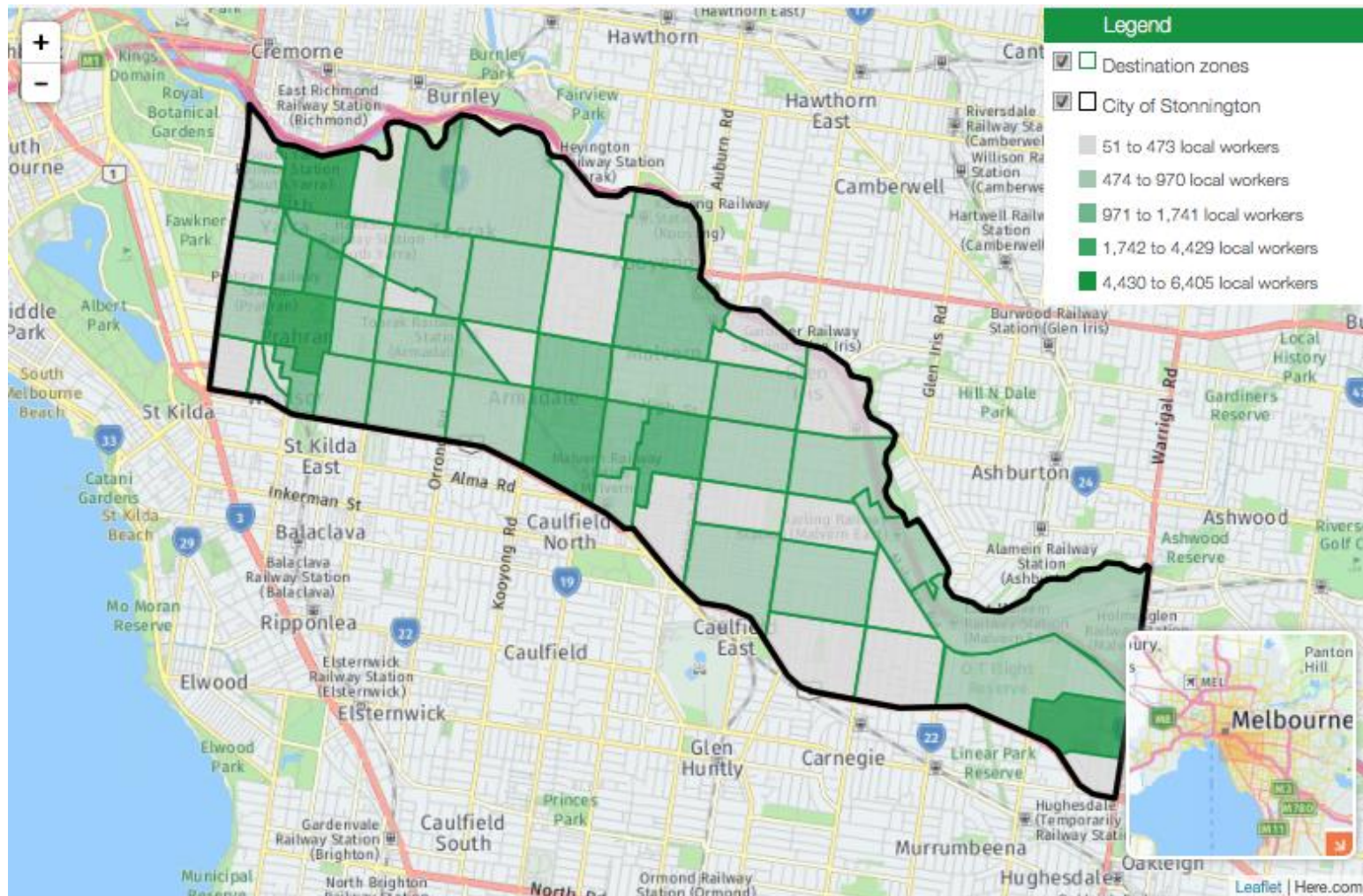
3.1.1 BOROONDARA



Source: Australian Bureau of Statistics, Census of Population and Housing 2016.
Compiled and presented in economy.id by .id, the population experts.



Source: Australian Bureau of Statistics, Census of Population and Housing 2016. Compiled and presented in economy.id by .id, the population experts.



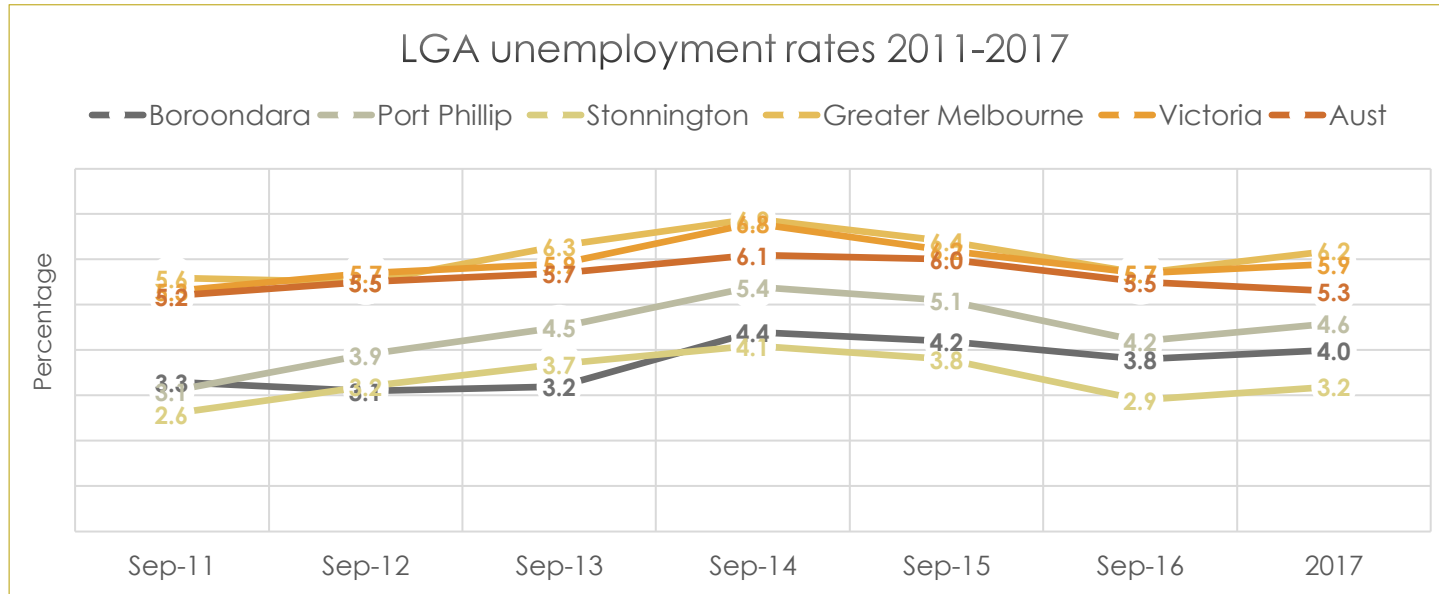
Source: Australian Bureau of Statistics, Census of Population and Housing 2016. Compiled and presented in economy.id by .id, the population experts.

3.2 UNEMPLOYMENT (LABOUR FORCE SURVEY)

3.2.2 LGA UNEMPLOYMENT RATES, SEPTEMBER 2011-2017

Area	Sep 2011	Sep 2012	Sep 2013	Sep 2014	Sep 2015	Sep 2016	Sep 2017
Boroondara	3.3	3.1	3.2	4.4	4.2	3.8	4.0
Port Phillip	3.1	3.9	4.5	5.4	5.1	4.2	4.6
Stonnington	2.6	3.2	3.7	4.1	3.8	2.9	3.2
Greater Melbourne	5.6	5.5	6.3	6.9	6.4	5.7	6.2
Victoria	5.3	5.7	5.9	6.8	6.2	5.7	5.9
Australia	5.2	5.5	5.7	6.1	6.0	5.5	5.3

Source: Department of Jobs and Small Business, Small Area Labour Markets – LGA, 2017



The three local government areas comprising the IELLEN region have had lower unemployment rates than Greater Melbourne, Victoria and Australia since 2011.

3.3 YOUTH UNEMPLOYMENT (CENSUS)

3.3.1 YOUTH UNEMPLOYMENT

Unemployment rate		Boroondara	Port Phillip	Stonnington	Victoria
15-19 years	Males	22.5	25.6	21.0	21.6
	Females	16.6	17.5	19.6	19.4
	Persons	19.3	20.9	20.4	20.5
20-24 years	Males	11.5	9.9	11.6	13.2
	Females	9.5	8.8	10.2	11.4
	Persons	10.5	9.3	10.9	12.3

Source: Statistical Data for Victorian Communities, ABS Census 2016

Labour force participation		Boroondara	Port Phillip	Stonnington	Victoria
15-19 years	Males	31.1	32.5	30.9	39.9
	Females	37.4	40.1	36.6	44.5
	Persons	34.3	36.3	33.8	42.2
20-24 years	Males	68.7	73.2	67.8	69.5
	Females	71.4	76.7	67.2	67.9
	Persons	70.0	75.2	67.5	68.7

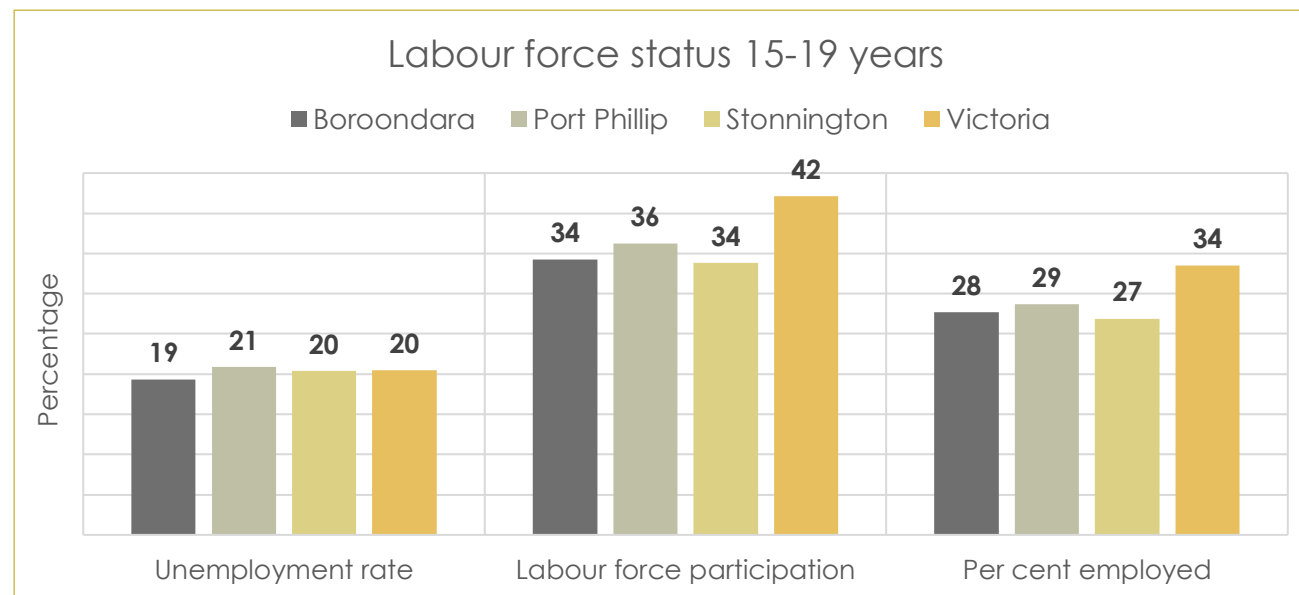
Source: Statistical Data for Victorian Communities, ABS Census 2016

* Labour force participation refers to the total number of people currently employed or actively in search of a job.

Employed		Boroondara	Port Phillip	Stonnington	Victoria
15-19 years	Males	24.1	24.2	24.4	31.3
	Females	31.2	33.1	29.4	35.9
	Persons	27.7	28.7	26.9	33.5
20-24 years	Males	60.8	66.0	59.9	60.4
	Females	64.7	70.0	60.3	60.1
	Persons	62.7	68.2	60.1	60.3

Source: Statistical Data for Victorian Communities, ABS Census 2016

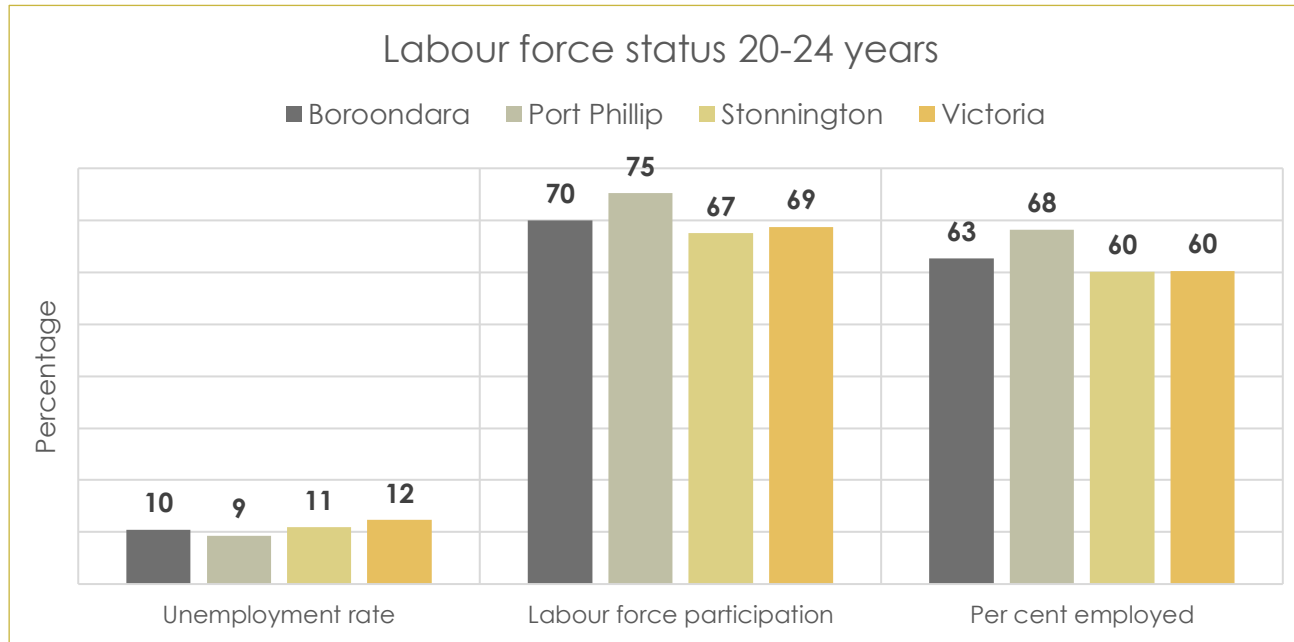
3.3.2 LABOUR FORCE STATUS 15-19 YEAR OLDS



The unemployment rates of 15-19 year olds were similar for the three LGAs of interest and Victoria, ranging between 19.3 and 20.9%.

Labour force participation however, was higher for Victorian 15-19 year olds at 42.2%, compared to 33.8% for Stonnington, 36.3% for Port Phillip and 34.3% for Boroondara.

Also for 15-19 year olds employed, Victoria was highest at 33.5%, followed by Port Phillip at 28.7% and 27.7% for Boroondara.



The unemployment rates for 20-24 year olds ranged between 9.3% in Port Phillip, 10.5% in Boroodara, 10.9% in Stonnington, to 12.3% in Victoria.

Labour force participation was highest in Port Phillip at 75.2%, followed by Boroodara at 70.0%, Victoria at 68.75, and the lowest of 67.5% in Stonnington.

Port Phillip had the highest percentage of 20-24 year olds employed at 68.2%, followed by Boroodara at 62.7%, then Victoria and Stonnington at 60.3% and 60.1% respectively.

SOURCES

Australian Bureau of Statistics, 2016 Census of Population and Housing, *General Community Profile, Australia*, Cat. No. 2001.0, ABS, Canberra.

Australian Bureau of Statistics, 2016 Census of Population and Housing, *General Community Profile, Boroondara*, Cat. No. 2001.0, ABS, Canberra.

Australian Bureau of Statistics, 2016 Census of Population and Housing, *General Community Profile, Greater Melbourne*, Cat. No. 2001.0, ABS, Canberra.

Australian Bureau of Statistics, 2016 Census of Population and Housing, *General Community Profile, Port Phillip*, Cat. No. 2001.0, ABS, Canberra.

Australian Bureau of Statistics, 2016 Census of Population and Housing, *General Community Profile, Stonnington*, Cat. No. 2001.0, ABS, Canberra.

Australian Bureau of Statistics, 2016 Census of Population and Housing, *General Community Profile, Victoria*, Cat. No. 2001.0, ABS, Canberra.

Australian Bureau of Statistics, 2018, *Labour Force, Australia, Detailed – Electronic Delivery, Dec 2017*, Cat No. 6291.0.55.001, ABS, Canberra.

Department of Jobs and Small Business, 2017, *Employment Outlook to May 2022*, found <http://lmip.gov.au/default.aspx?LMIP>, viewed 02 April 2018.

Department of Jobs and Small Business, 2018, Small Area Labour Markets publications, *LGA Data tables - Small Area Labour Markets - Dec Quarter 2017*, <https://www.jobs.gov.au/small-area-labour-markets-publication>, viewed 02 April, 2018.

Department of Jobs and Small Business, 2017, *Employment Region – Employment Projections to May 2022*, available at <https://www.jobs.gov.au/small-area-labour-markets-publication>, viewed 02 April, 2018.

.id the population experts, 2017, *City of Boroondara Economic Profile*, <https://economy.id.com.au/boroondara/employment-locations>, viewed 02 April 2018.

.id the population experts, 2017, *City of Port Phillip Economic Profile*, <https://economy.id.com.au/port-phillip/employment-locations>, viewed 02 April 2018.

.id the population experts, 2017, *City of Stonnington Economic Profile*, <https://economy.id.com.au/stonnington/employment-locations>, viewed 02 April 2018.

Statistical Data for Victorian Communities, *Labour force status or residents by age and sex*, 2017, found at <http://greaterdandenong.com/document/18464/statistical-data-for-victorian-communities>, viewed 02 April 2018.

Statistical Data for Victorian Communities, *Youth Disengagement by Gender – young people not in work or education*, 2017, found at <http://greaterdandenong.com/document/18464/statistical-data-for-victorian-communities>, viewed 02 April 2018.