

---

# SOCIAL ENTERPRISES

A YOUTH ORIENTATED RESOURCE (MELBOURNE METRO)



---

# PURPOSE

This resource outlines Social Enterprises that are operated by, and/or provide opportunities to young people.

All Enterprises included are located within or provide opportunities to young people from Port Phillip, Stonnington and Boroondara.

Throughout this resource, there are clickable web links for further information.

“

SOCIAL ENTERPRISES ARE  
BUSINESSES THAT TRADE TO  
INTENTIONALLY TACKLE  
SOCIAL PROBLEMS, IMPROVE  
COMMUNITIES, PROVIDE  
PEOPLE ACCESS TO  
EMPLOYMENT AND  
TRAINING, OR TO HELP THE  
ENVIRONMENT

”

**Social Traders**



Inner Melbourne Vet Cluster

## AVIDITY

Boutique salon that enables disengaged youth and marginalised members of the Port Phillip and inner Melbourne community to access accredited and pre-accredited training and gain skills in hairdressing and make-up. All surpluses generated are reinvested.

**Contact:** (03) 9686 2354

**Website:** [www.imvc.com.au](http://www.imvc.com.au)



Mission Australia

## CHARCOAL LANE

Restaurant and live hospitality training site in Gertrude St, Fitzroy for Aboriginal and disadvantaged young people. Participants undertake a six month traineeship - Certificate II in Hospitality. Upon completion of the program participants are supported to obtain employment with partner organisations.

**Contact:** [eat@charcoallane.com.au](mailto:eat@charcoallane.com.au)  
(03) 9418 3400

**Website:** [www.charcoallane.com.au](http://www.charcoallane.com.au)



Prahran Community Learning Centre Inc.

## THE COLLECTIVE BOUTIQUE

Resale clothes and accessories retail boutique in Greville St, Prahran that provides employment and training opportunities to young people enrolled in pre-accredited and accredited training through the Centre. All sales are reinvested into PCLC to support disadvantaged families accessing vital services in education and welfare.

**Contact:** [info@thecollectiveboutique.com.au](mailto:info@thecollectiveboutique.com.au)  
(03) 9529 6489

**Website:** [www.thecollectiveboutique.com.au](http://www.thecollectiveboutique.com.au)



## CREPES FOR CHANGE

Youth led crêpe van that operates in Melbourne's streets, markets and festivals with all proceeds going to the alleviation of youth homelessness in Australia. Van staff are exclusively young volunteers.

**Contact:** [dan@crepesforchange.com](mailto:dan@crepesforchange.com)

**Website:** [crepesforchange.com](http://crepesforchange.com)

GOOD COFFEE  
GOOD  
2 GO  
GOOD CAUSE

## Youth Projects

### GOOD COFFEE GOOD 2 GO

Café and hospitality training site in Hosier Lane, Melbourne that helps young people to gain access to work experience and life skills. Featuring hands on mentoring in hospitality from industry experts, Good 2 Go links young people with accredited vocational training. Mental health and AOD professionals provide any extra support needed. Profits from the cafe are redirected back into the programs and services offered by Youth Projects.

**Contact:** (03) 9304 9100

**Website:** [youthprojects.org.au/programs/good-2-go](http://youthprojects.org.au/programs/good-2-go)



## Jesuit Social Services

### IGNITE CAFE

Live hospitality training environment located within the Camberwell Civic building that provides kitchen, food handling and customer service skills to long term unemployed people through Jesuit Colleges vocational education and training programs,

**Contact:** [jss@jss.org.au](mailto:jss@jss.org.au)

(03) 9421 7629

**Website:** [www.jss.org.au](http://www.jss.org.au)





## LONG STREET CAFE

Café, catering service and live training hospitality site for refugee young people located in Hoddle st, Richmond . Participants are provided with a six-month paid traineeship in the hospitality industry. After which, graduates are assisted to secure ongoing employment.

**Contact:** longstreetcoffee@gmail.com  
0415 164 130

**Website:** [www.longstreetcoffee.com](http://www.longstreetcoffee.com)



## MERCHANT ROAD

Event catering enterprise that works in partnership with not-for-profit, Brewing for Change, to fund paid hospitality traineeships for young refugees who are currently unemployed.

**Contact:** hello@merchantroadcatering.com  
**Website:** [www.merchantroadcatering.com](http://www.merchantroadcatering.com)



## SCARF HOSPITALITY

Provides opportunities to young people (18-28 years) seeking protection and those from refugee and migrant backgrounds young people who are facing barriers to work, specifically those that are long-term unemployed. We partner with restaurants and other hospitality businesses to provide meaningful training, mentoring and paid work experience to our participants.

**Contact:** [hello@scarfcommunity.org](mailto:hello@scarfcommunity.org)

**Website:** [www.scarfcommunity.org](http://www.scarfcommunity.org)



Kew Neighbourhood Learning Centre

## SPARECHAIR CAFE

On site Cafe and training site in Derby St, Kew for the Centre's pre-accredited courses. All proceeds go into running activities and groups for the local community.

**Contact:** [admin@kewnlc.org.au](mailto:admin@kewnlc.org.au)  
(03) 9853 3126

**Website:** [www.kewnlc.org.au](http://www.kewnlc.org.au)



## STREAT

Streat operates four cafes, a catering company and a coffee roaster. It offers pathways to employment for homeless and disadvantaged young people through a suite of vocational training courses, life skills programs, social and creative activities and individualized case management services as well as providing support to access specialist support services.

**Contact:** [info@streat.com.au](mailto:info@streat.com.au)  
(03) 9629 4222

**Website:** [www.streat.com.au](http://www.streat.com.au)



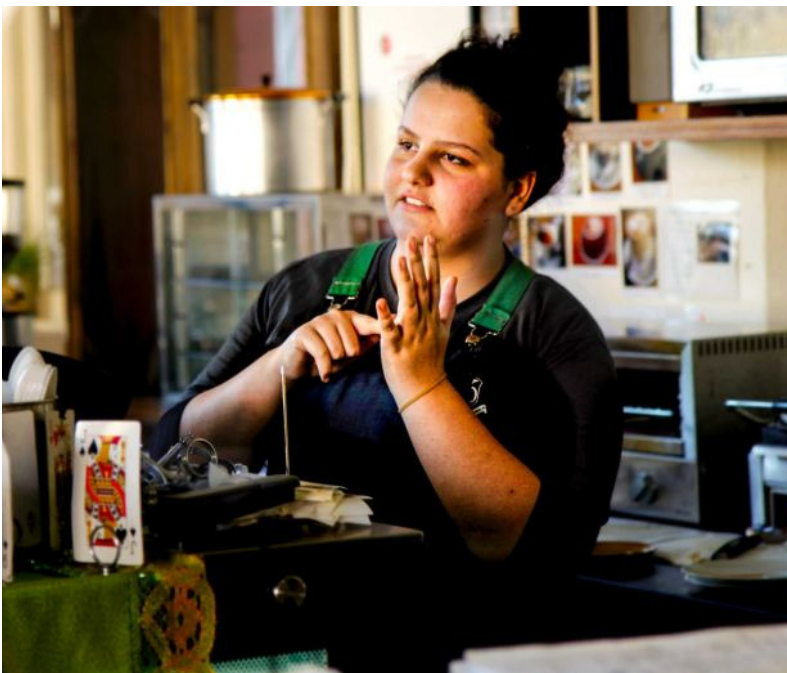
## THE SOCIAL STUDIO

Located in Smith St, Collingwood, The Social Studio provides pre-accredited, TAFE training, work experience and entry-level employment in retail, manufacturing and fashion design. Through the school and manufacturing and retail enterprises, The Social Studio creates pathways to employment and further education for at-risk, unemployed and vulnerable young people from refugee and migrant backgrounds.

**Contact:** (03) 9417 2143

**Website:** [www.thesocialstudio.org](http://www.thesocialstudio.org)





Victorian College of the Deaf

## TRADEBLOCK CAFE

Cafe and catering service operated on the College of the Deaf campus. Current students meet outcomes for Personal Development and Work Related Skills units as part of the school's VCAL program VET qualification in hospitality. In addition, the cafe provides opportunities for adults from the deaf community and ex-students to build work experience and employability skills.

**Contact:** [victorian.ds@edumail.vic.gov.au](mailto:victorian.ds@edumail.vic.gov.au)  
(03) 9510 1706

**Website:** [www.vcd.vic.edu.au](http://www.vcd.vic.edu.au)



Mission Australia

## SYNERGY REPAIRS

Smash repair workshop offering a full suite of services, while providing on the job training and work experience for disadvantaged young people. Participants are engaged in a six month accredited training program in automotive paint and panel-beating while addressing life skills and personal development issues. Upon completion of the program trainees are placed at automotive repair centres to undertake apprenticeships.

**Contact:** [service@synergyrepairs.com.au](mailto:service@synergyrepairs.com.au)  
(03) 8329 5400

**Website:** [missionaustralia.com.au](http://missionaustralia.com.au)

# WAYS & MEANS



Youth Support and Advocacy Service

## WAYS & MEANS CAFE

Café and live training site in Little Lonsle St, Melbourne providing disadvantaged young people with work experience in the hospitality industry. The cafe acts provides a supportive pathway for existing YSAS clients to build confidence to transition back into paid employment or study.

**Contact:** [hello@waysandmeans.org.au](mailto:hello@waysandmeans.org.au)  
(03) 9415 8881

**Website:** [www.waysandmeans.org.au](http://www.waysandmeans.org.au)

Whitelion

## WHEELLY GOOD COFFEE

Café, coffee cart and coffee event enterprise that operate to assist disadvantaged young people (15 - 25 years) to develop skills to find employment in the hospitality industry. The connected program includes three stages: Training and accreditation, development and practice and networking and employment.

**Contact:** [cameron.brown@whitelion.asn.au](mailto:cameron.brown@whitelion.asn.au)  
(03) 8354 0818

**Website:** [www.wheellygoodcoffee.com.au](http://www.wheellygoodcoffee.com.au)



Youth Development Agency

## YOUTHWORX MEDIA

Media Arts training studio and video production company. Young people (12-25 years) who may have experienced homelessness or educational disadvantage work with a mixed team of professional media-makers, trained educators and youth workers to become media trainees, producers and broadcasters with an aim to reconnect with learning and employment opportunities. Experienced filmmakers mentor trainees to provide full professional film production services

**Contact:** [info@youthworx.org.au](mailto:info@youthworx.org.au)

(03) 9386 1232 / Zoe Beck 0417 451 880

**Website:** [www.youthworx.org.au](http://www.youthworx.org.au)



## REBUILD

Property and facilities management social enterprise employing disadvantaged young people who have offended or who are at risk of offending. Crew members are sourced from a multitude of areas including the Department of Human Services, Department of Corrections and various job service agencies, Melbourne wide.

**Contact:** [gary.sinclair@ymca.org.au](mailto:gary.sinclair@ymca.org.au)  
0457988026

**Website:** [www.bridgeproject.ymca.org.au](http://www.bridgeproject.ymca.org.au)





This resource has been compiled by the IELLEN. Information is current as of December 2017. For feedback or comments, contact the IELLEN at:



Ph 03 9510 5444



[iellen@iellen.org.au](mailto:iellen@iellen.org.au)  
[www.iellen.org.au](http://www.iellen.org.au)



1/107 Wellington Street  
St Kilda, VIC, 3182