
SOCIAL ENTERPRISES

A YOUTH ORIENTATED RESOURCE (MELBOURNE METRO)



PURPOSE

This resource outlines Social Enterprises that are operated by, and/or provide opportunities to young people.

All Enterprises included are located within or provide opportunities to young people from Port Phillip, Stonnington and Boroondara.

Throughout this resource, there are clickable web links for further information.

“

SOCIAL ENTERPRISES ARE
BUSINESSES THAT TRADE TO
INTENTIONALLY TACKLE
SOCIAL PROBLEMS, IMPROVE
COMMUNITIES, PROVIDE
PEOPLE ACCESS TO
EMPLOYMENT AND
TRAINING, OR TO HELP THE
ENVIRONMENT

”

Social Traders



Inner Melbourne Vet Cluster

AVIDITY

Boutique salon that enables disengaged youth and marginalised members of the Port Phillip and inner Melbourne community to access accredited and pre-accredited training and gain skills in hairdressing and make-up. All surpluses generated are reinvested.

Contact: (03) 9686 2354

Website: www.imvc.com.au



Mission Australia

CHARCOAL LANE

Restaurant and live hospitality training site in Gertrude St, Fitzroy for Aboriginal and disadvantaged young people. Participants undertake a six month traineeship – Certificate II in Hospitality. Upon completion of the program participants are supported to obtain employment with partner organisations.

Contact: eat@charcoalallane.com.au
(03) 9418 3400

Website: www.charcoalallane.com.au



Society Melbourne

THE COFFEE CART CHANGING LIVES

Two coffee carts that provide training and employment to young people experiencing or at-risk of homelessness. The carts support participants to grow their self-confidence, employment and life skills. One coffee cart is available for hire for private events with funds generated reinvested into training and operations. The second cart is located at RMIT and has the primary focus of implementing the Hospitality Training Program.

Contact: coffeecart@society.melbourne

Website: www.society.melbourne



Prahran Community Learning Centre

THE COLLECTIVE BOUTIQUE

Resale clothes and accessories retail boutique in Greville St, Prahran that provides employment and training opportunities to young people enrolled in pre-accredited and accredited training through the Centre. All sales are reinvested into PCLC to support disadvantaged families accessing vital services in education and welfare.

Contact: info@thecollectiveboutique.com.au
(03) 9529 6489

Website: www.thecollectiveboutique.com.au



Society Melbourne

CREPES FOR CHANGE

Youth led crêpe van that operates in Melbourne's streets, markets and festivals with all proceeds going to the alleviation of youth homelessness in Australia. Van staff are exclusively young volunteers.

Contact: info@crepesforchange.com

Website: crepesforchange.com



Youth Projects

GOOD COFFEE GOOD 2 GO

Café and hospitality training site in Hosier Lane, Melbourne that helps young people to gain access to work experience and life skills. Featuring hands on mentoring in hospitality from industry experts, Good 2 Go links young people with accredited vocational training. Mental health and AOD professionals provide any extra support needed. Profits from the cafe are redirected back into the programs and services offered by Youth Projects.

Contact: (03) 9304 9100

Website: youthprojects.org.au



Jesuit Social Services

IGNITE CAFE

Live hospitality training environment located within the Camberwell Civic building that provides kitchen, food handling and customer service skills to long term unemployed people through Jesuit Colleges vocational education and training programs,

Contact: jss@jss.org.au
(03) 9421 7629

Website: jss.org.au



MERCHANT ROAD

A hospitality social enterprise that offers paid internships for women from refugee backgrounds who are currently unemployed. Merchant Road creates beautiful dining experiences, focusing on event management, food, styling, and service for product launches, picnic parties, weddings, and family feasts.

Contact: hello@merchantroadcatering.com

Website: www.merchantrd.com



YMCA REBUILD

Property and facilities management social enterprise employing disadvantaged young people who have offended or who are at risk of offending. Crew members are sourced from a multitude of areas including the Department of Human Services, Department of Corrections and various job service agencies, Melbourne wide.

Contact: gary.sinclair@ymca.org.au
0457988026

Website: www.bridgeproject.ymca.org.au



SCARF

Provides opportunities to young people (18-28 years) seeking protection and those from refugee and migrant backgrounds who face barriers to employment. We partner with Melbourne's best restaurants and other hospitality businesses to provide awesome hospitality training, mentoring and paid work experience.

Contact: hello@scarfcommunity.org

Website: www.scarfcommunity.org



Kew Neighbourhood Learning Centre

SPARECHAIR CAFE

On site Cafe and training site in Derby St, Kew for the Centre's pre-accredited courses. All proceeds go into running activities and groups for the local community.

Contact: admin@kewnlc.org.au
(03) 9853 3126

Website: www.kewnlc.org.au

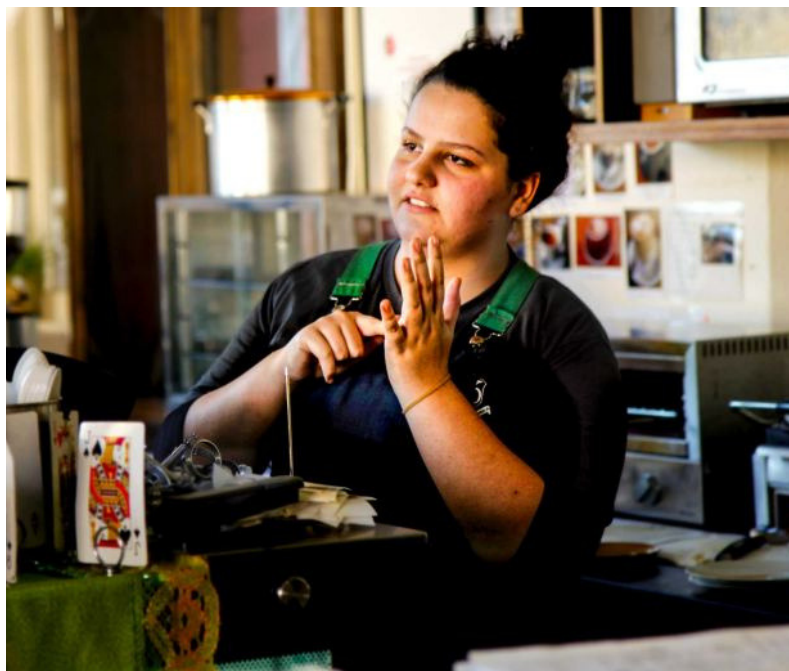


STREAT

Streat operates four cafes, a catering company and a coffee roaster. It offers pathways to employment for homeless and disadvantaged young people through a suite of vocational training courses, life skills programs, social and creative activities and individualized case management services as well as providing support to access specialist support services.

Contact: info@streat.com.au
(03) 9629 4222

Website: www.streat.com.au



THE SOCIAL STUDIO

Located in Smith St, Collingwood, The Social Studio provides pre-accredited, TAFE training, work experience and entry-level employment in retail, manufacturing and fashion design through its clothes manufacturing, digital printing service. Through these enterprises, It creates pathways to employment and further education for at-risk, unemployed and vulnerable young people from refugee and migrant backgrounds.

Contact: (03) 9417 2143

Website: www.thesocialstudio.org

Victorian College of the Deaf

TRADEBLOCK CAFE

Cafe and catering service operated on the College of the Deaf campus. Current students meet outcomes for Personal Development and Work Related Skills units as part of the school's VCAL program VET qualification in hospitality. In addition, the cafe provides opportunities for adults from the deaf community and ex-students to build work experience and employability skills.

Contact: victorian.ds@edumail.vic.gov.au

(03) 9510 1706

Website: www.vcd.vic.edu.au



Mission Australia

SYNERGY REPAIRS

Smash repair workshop offering a full suite of services, while providing on the job training and work experience for disadvantaged young people. Participants are engaged in a six month accredited training program in automotive paint and panel-beating while addressing life skills and personal development issues. Upon completion of the program trainees are placed at automotive repair centres to undertake apprenticeships.

Contact: service@synergyrepairs.com.au
(03) 8329 5400

Website: www.missionaustralia.com.au



Whitelion

WHEELLY GOOD COFFEE

Café, coffee cart and coffee event enterprise that operate to assist disadvantaged young people (15 - 25 years) to develop skills to find employment in the hospitality industry.

The connected program includes three stages: Training and accreditation, development and practice and networking and employment.

Contact: cameron.brown@whitelion.asn.au
(03) 8354 0818

Website: www.wheellygoodcoffee.com.au



Youth Development Agency

YOUTHWORX MEDIA

Media Arts training studio and video production company. Young people (12-25 years) who may have experienced homelessness or educational disadvantage work with a mixed team of professional media-makers, trained educators and youth workers to become media trainees, producers and broadcasters with an aim to reconnect with learning and employment opportunities. Experienced filmmakers mentor trainees to provide full professional film production services

Contact: zoe.beck@yda.org.au

(03) 9386 1232 / Zoe Beck 0417 451 880

Website: www.youthworx.org.au



This resource has been compiled by the IELLEN. Information is current as of December 2018. For feedback or comments, contact the IELLEN at:



Ph 03 9510 5444



iellen@iellen.org.au
www.iellen.org.au



1/107 Wellington Street
St Kilda, VIC, 3182